



**BIO-RESPONSE
SOLUTIONS**

200 Colin Court
Danville, IN 46122
317-386-3500

www.bioresponsesolutions.com
www.bioresponsefuneral.com
www.bioliquidator.com

* Alkaline Hydrolysis Systems for Human Disposition

2019 Models & General Overview

PATENTED

CONFIDENTIAL

NOTICE:

This document contains confidential material and may only be viewed by the intended recipient. The photos and information contained within this document are property of Bio-Response Solutions, Inc.

Due to the nature of the content and proprietary enclosures, this document may not be shared in any way without express written consent from Bio-Response Solutions, Inc.

For permission to share this presentation, please contact us:

Bio-Response Solutions

200 Colin Court Danville, IN 46122

317-386-3500

info@bioresponsesolutions.com

WARNING:

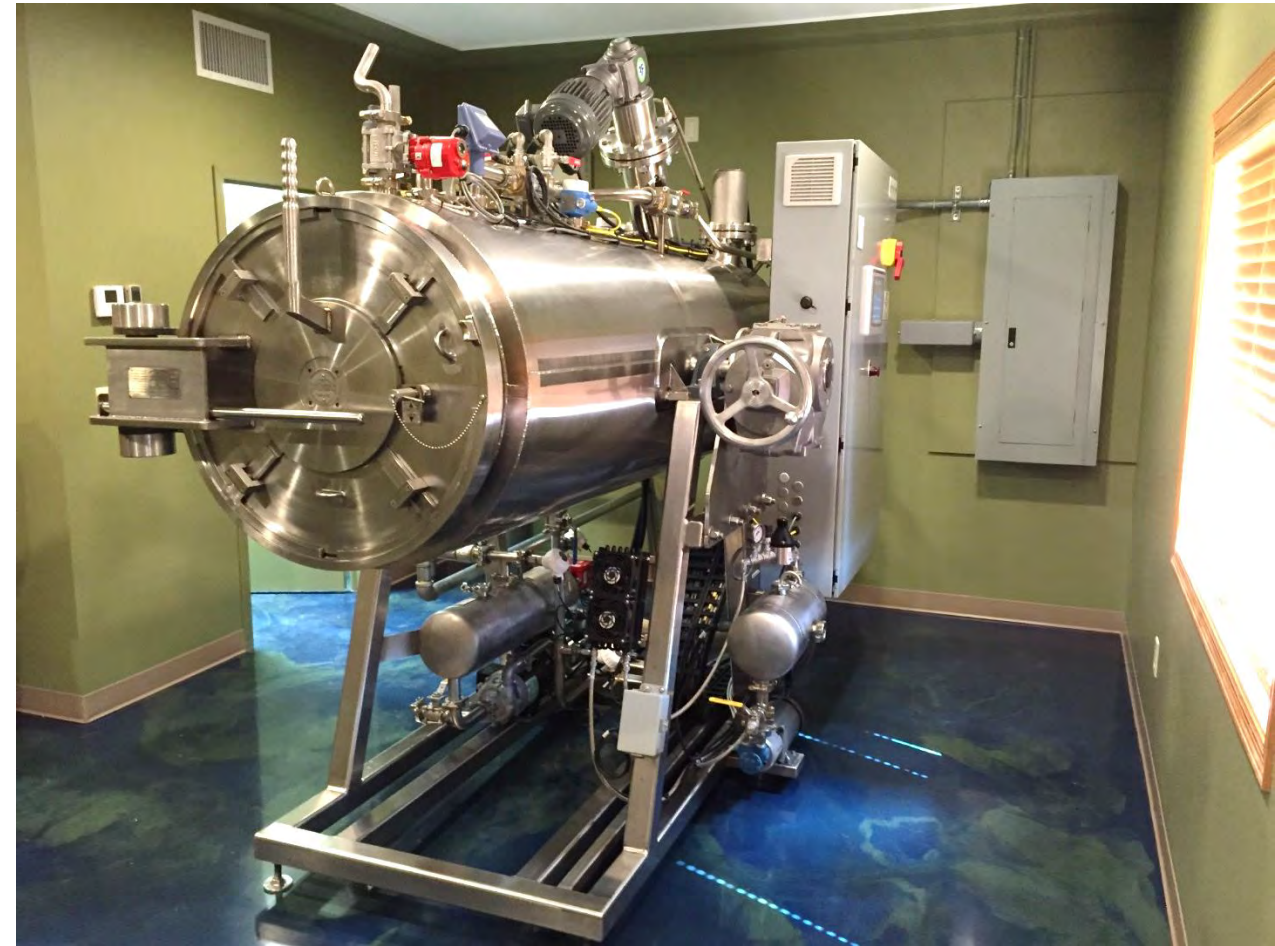
This document may contain content and photos of a graphic nature. This content is intended only for funeral/after-care industry professionals.

2016 Models

LT-28



HT-28



BIO-RESPONSE
SOLUTIONS
PATENTED



LT-28 Example Installation

Capacity: Up to 500lb case size
Cycle Time: 16 hours, or 1 process per day (3 every 2 days)

- Ideal for facilities with lower case volume.
- Very simple installation and operation.
- Lowest cost system available.
- Please ask us if this is a good fit for your needs!

Simple door
with hand-toggle latches

*(takes less than 45 seconds
to open and close)*

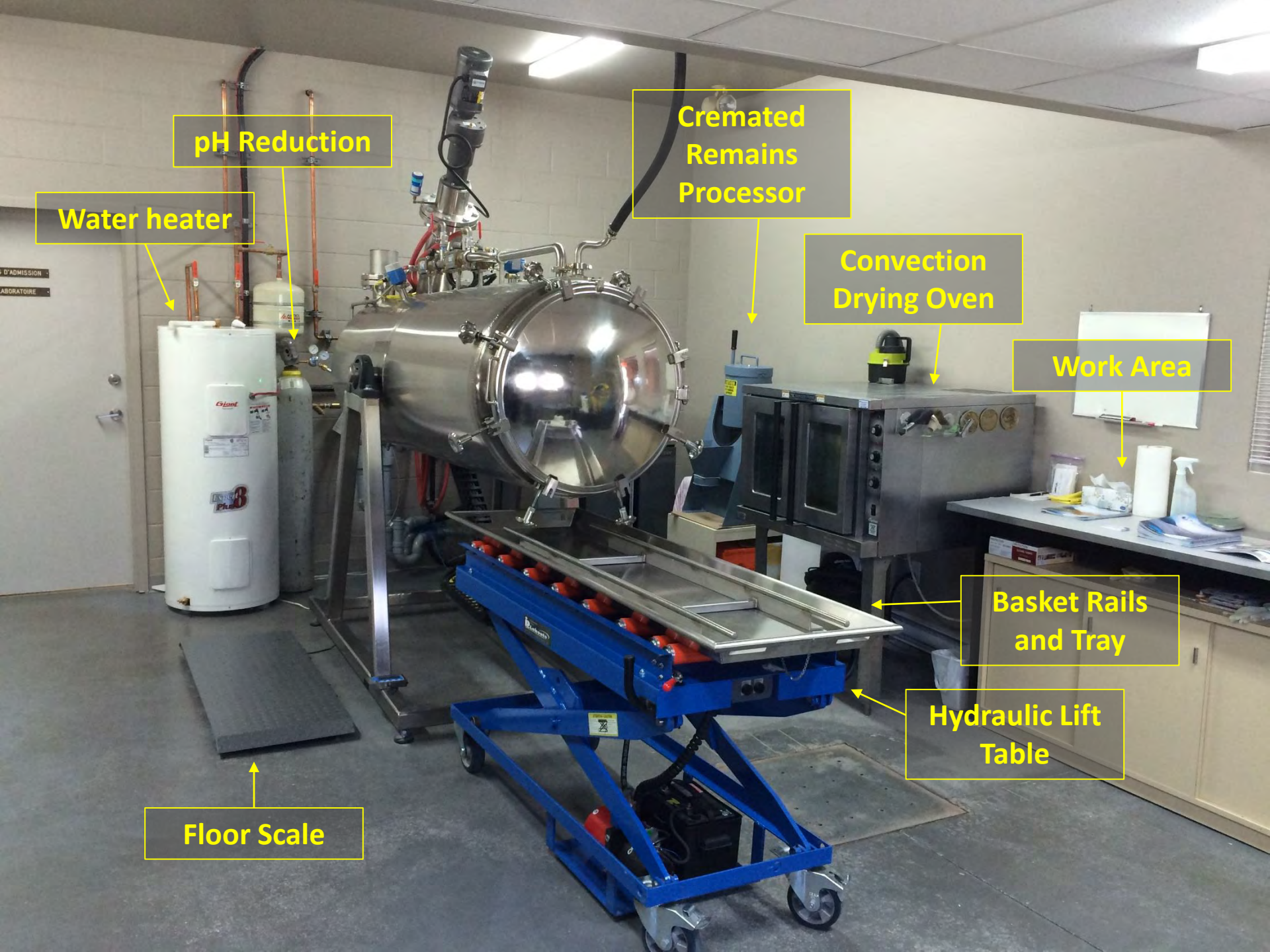




Typical Room Components

Please note that lift tables are available with built-in scales.

Our tray and rail system can attach to any crematory lift table, and can be removed if the lift table has shared function for a facility with a retort.



Reference for system size.



Example viewing window
from the viewing room



CE course for area funeral professionals.



HT-28 Example Installation

Capacity: Up to 500lb case size
Cycle Time: 7 hours, or 3 processes per day (7 every 2 days)

- Ideal for facilities with higher case volume.
- Very simple installation and operation.
- All 2016 models feature our sophisticated single-latch door.
- Please ask us if this is a good fit for your needs!

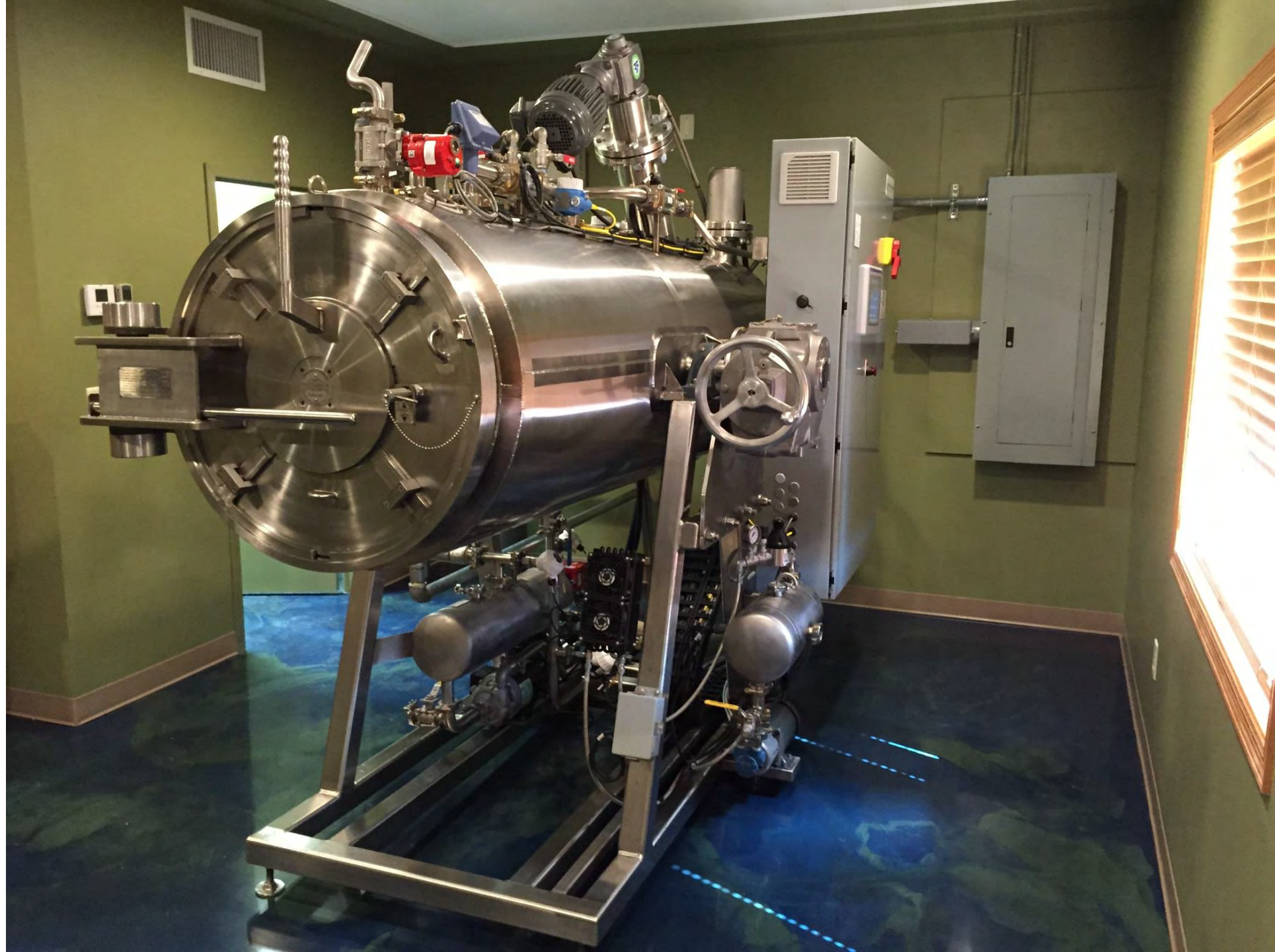
HT-28

Single-latch door



HT-28

Unit in horizontal loading
position



Unit in angled operating position.

If you're unsure why we do this, please ask!

In a nutshell, it saves energy, water, and allows an efficient and complete process. It also GREATLY simplifies remains collection and cleaning after the process.



HT-28 Another Example Installation

This facility has both a PET-400 System for pet dispositions and a HT-28 for human dispositions.

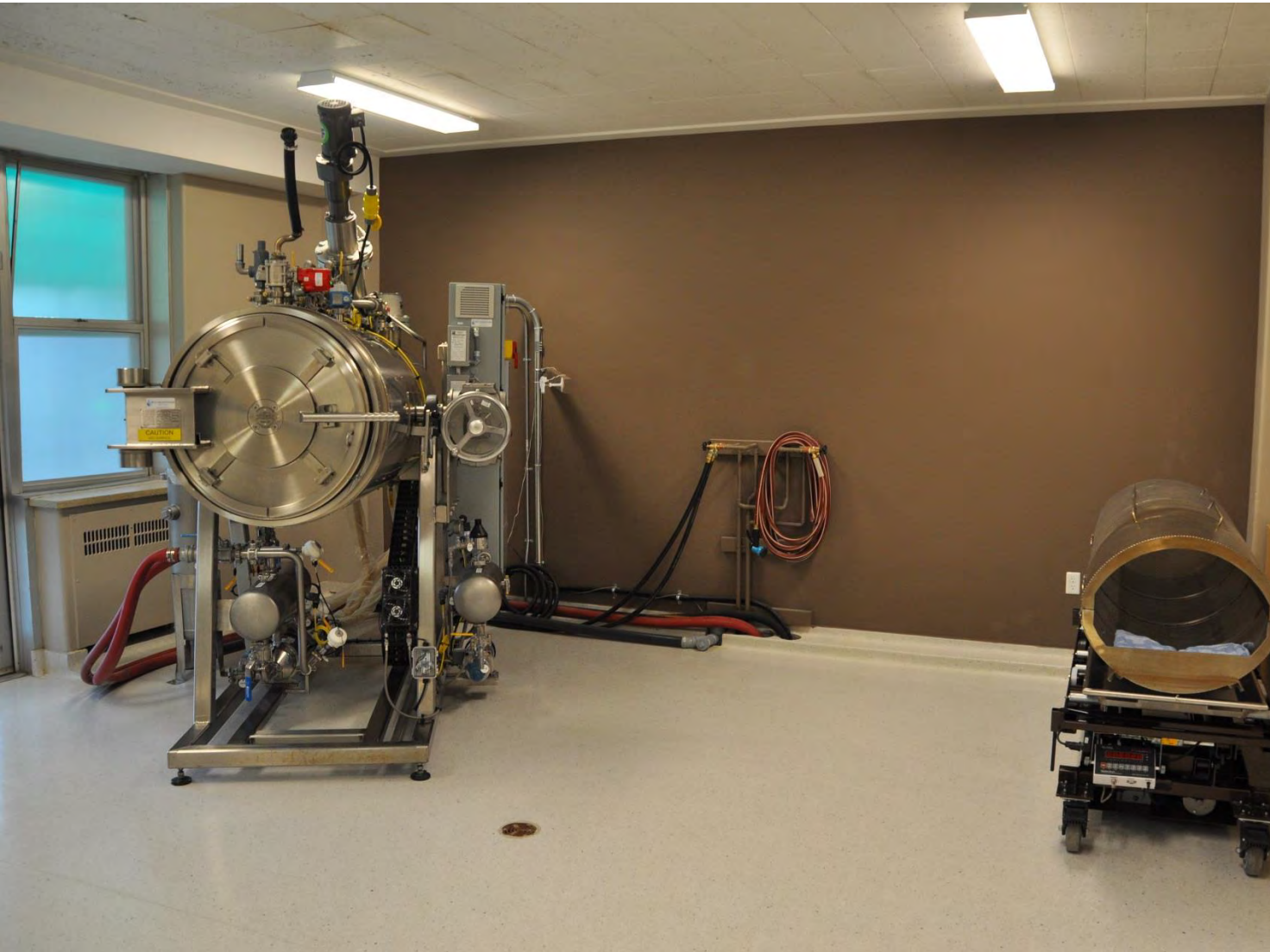


Above: Convection Oven



*Above: PET-400 System
Right: HT-28 System*







HT-28 Another Example Installation

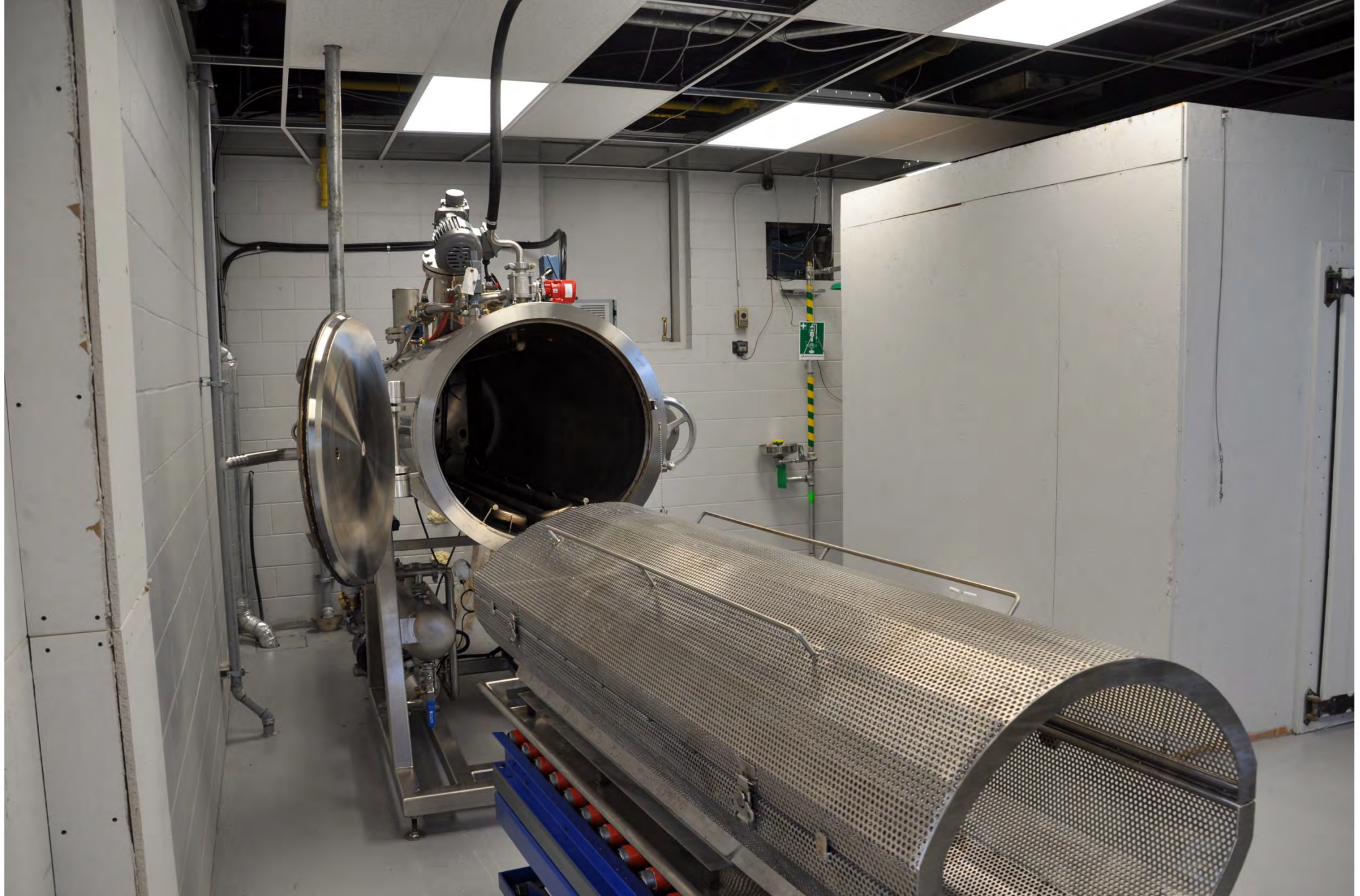






HT-28 Another Example Installation





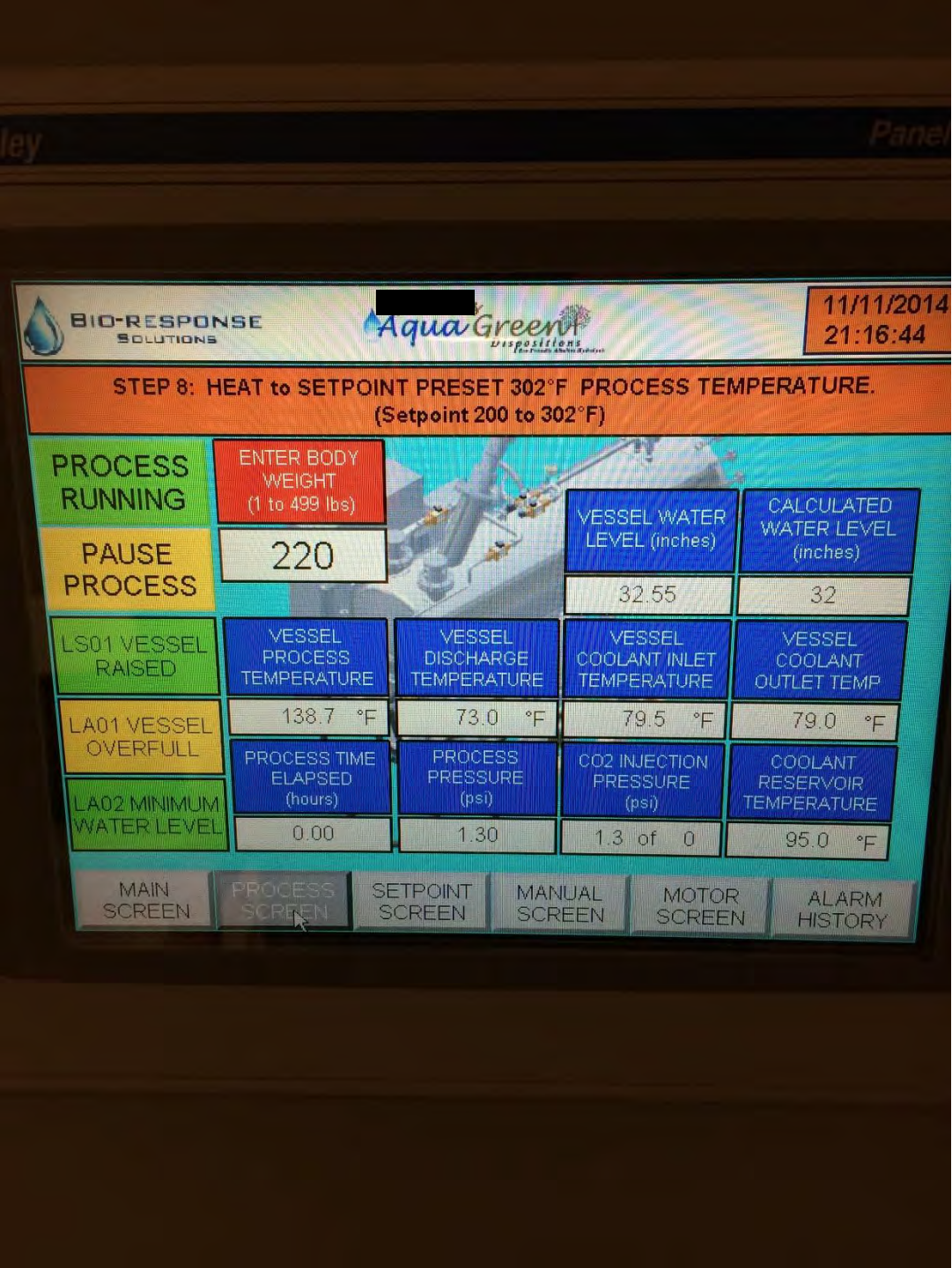




Touch Screen HMI

All of our systems feature top of the line Allen Bradley Panelview color touch screens.

Bio-Response Solutions is a certified UL Panel Shop.



Lift Table Examples

*Top Row:
Hydraulic Lift Table with
built-in scale to provide
the case weight.*



*Bottom Row:
Our easy-clean basket
rails with tray system
that can be affixed to
almost any crematory
or alternative lift table.*



*Far Right: Lift Table
without a built-in scale.
This is less costly than
one with a built-in
scale, but it requires a
floor scale to weigh the
deceased. Our AH
systems are available
with optional load cells
to automatically
calculate weight.*

Other Installations

Previous Models
(these will have different door designs)

LT-27

*Previous door
design*



*Previous door
Design*

Additional Installations



HT-28

*Previous door
design*





Institutional Installation

HT-28 Custom

System Features:

- Liquid Chemical Injection
- Load Cells (automatic weight calculation)
- Advanced Cooling Technology
- Automatic pH Recording
- Cycle Printer
- Effluent Adjustment Tank (only required for this install)

This facility has utilities in place to add two more units (see top photos).



Families seem to like

- Having the choice, whether they select it or not
- No fire
- 20% more ash remains returned
- Some view this as a more gentle process (probably because one or both of the previous two points)
- The “GREEN” factor:
 - ✓ No emissions
 - ✓ Uses 90% less energy
 - ✓ Less than 1/10 the carbon footprint of cremation

Operators seem to like

- Offering another service to the families they serve
- No EPA air permits, less zoning restrictions, able to place this equipment where retorts are not allowed
- Push the button and leave; no need to attend the process
- Lower operational cost than cremation
- For small operations, economical to do one process (no initial heat up cost like a retort)
- Very low maintenance – no equivalent to rebricking!
- Machines last for YEARS
- Simple installation, small footprint
- The “Green” Factor
- The competitive edge
- With pet machines, ability to place each individual pet in its own compartment
- No fire (for many reasons)



BIO-RESPONSE SOLUTIONS

Please contact us for a more detailed presentation about how this process works, what the final remains look like, installation considerations, space requirements, etc.

*For regulatory information, please contact Samantha Sieber,
sam@bioresponsesolutions.com, 317-386-3500.*



BIO-RESPONSE SOLUTIONS

200 Colin Court
Danville, IN 46122
317-386-3500

www.bioresponsesolutions.com
www.bioresponsefuneral.com
www.bioliquidator.com

Questions or comments? Call or email us!
317-386-3500 info@bioresponsesolutions.com

We're a family owned and operated company based in Danville, Indiana.

Our office hours are M-F 8am-5:30pm EST, and our doors are always open to visitors!



For patent information, please visit
www.bioresponsesolutions.com/innovations